

Funding Impact Report

Reaching the right beneficiary, with the right support, at the right time.



Naval Children's Charity University Bursary Scheme

Naval Children's Charity has secured and delivered dedicated funding to support young people from Royal Naval families as they transition into university. Young people from service backgrounds can face unique challenges, including frequent relocation, family separation and the disruption these bring to education. As a result, participation in higher education amongst this group is lower than average.

The Naval Children's Charity University Bursary Scheme seeks to address these barriers through targeted financial support, delivered via Aspire as flexible cash payments, credit for essential resources, or emergency food vouchers, to ease transition and promote student success. This report highlights the early impact of the scheme in supporting access to learning resources and the costs associated with studying and living away from home.

Funds delivered via Aspire



Trusted by 40+ funders

Instant financial support
24/7, 365 days a year



Supports all forms of funding
(credit, cash or vouchers)

Funding impact

Types of funds

Cash Credit Voucher

£34,800

Total funding distributed

52

Beneficiaries supported

£669

Funding per beneficiary

Engagement with funds (Year to date)

Naval Children's Charity



92.3% 90.4% 74.2%

Philanthropic Benchmark



87.7% 77.3% 74.9%

HE Sector Benchmark

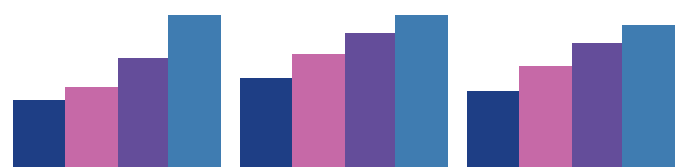


58.5% 45.6% 69.1%

■ Logged In ■ Drew funds ■ % funds used

Fund usage over time

33% 39% 53% 74% 43% 55% 65% 75% 37% 49% 60% 69%



Naval Children's Charity

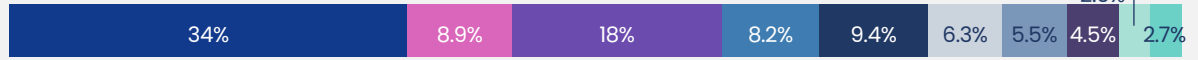
Philanthropic Benchmark

HE Sector Benchmark

■ First day ■ First week ■ First month ■ In year

Cash fund usage

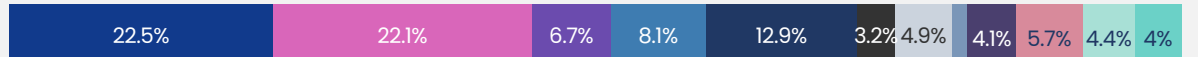
Naval Children's Charity



Philanthropic Benchmark



HE Sector Benchmark

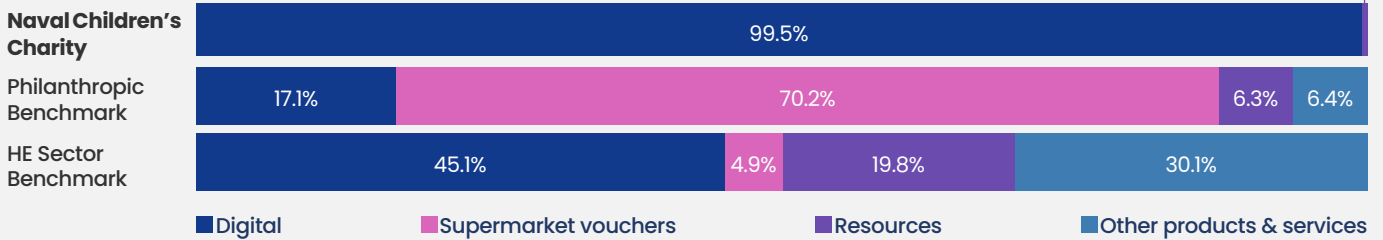


■ Accommodation ■ Bills ■ Resources ■ Transport ■ Food & Groceries ■ Childcare
■ Placement Costs ■ Clothes/Shopping ■ Health & Wellbeing ■ Expenses ■ Social & Leisure ■ Other

Early impact demonstrates that funding is reaching students at the point of greatest need and being used exactly as intended. A significantly higher proportion of spend is directed towards accommodation (34% versus a 22.5% sector benchmark) and essential learning resources (18% versus 6.7%), highlighting the importance of timely delivery. This enables students to secure stable housing and access critical study tools, reducing immediate financial pressure and supporting readiness for university life. By aligning funding closely with evidenced student priorities, this approach strengthens transition, resilience and the foundations for ongoing engagement and success in higher education.



Credit fund usage



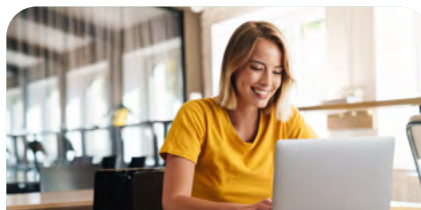
Credit fund usage shows a highly targeted approach, with 99.5% of spend delivered through digital support, ensuring funds are used exactly as intended. Compared with philanthropic and higher education benchmarks, this focused model enables rapid, controlled access to essential support at critical points in students' transition to university.

Beneficiary Voices in Action: Insights and Impact

Beneficiaries consistently describe how timely, targeted funding is making a meaningful difference at a critical point in their transition to university. By easing immediate pressures such as accommodation, food, travel and essential course costs, the bursary enables students to focus on learning, participation and future aspirations rather than financial strain. Delivered at the right moment, this support helps create stability, confidence and readiness for university life, demonstrating the powerful role that purpose-led funding plays in improving access, continuity and student success for young people from Royal Naval families.



With this support, I can purchase a season train ticket to travel to uni. I am forever grateful for this help since it's allowing me to pursue further education to become a doctor.



With this money I am able to get the right equipment software and book to complete the course to the best of my ability.



Helps me to afford food as I don't want to rely on my single mother as due to my fathers passing we don't have that much support.



This funding will make a huge difference as I can ensure I am eating healthy meals, and also means I can focus my time on my education.



It allows me to be able to purchase the necessary clothing that I require for me to be able to attend university. Without this I wouldn't be able to afford new clothes for myself and would have to be wearing old grown out clothes.



This funding has massively taken away extra financial pressure I already had. This funding will help me pay for essential resources that I am going to need. This is going to make a massive difference to my learning and help me stay on top of things.

The funding and insights presented in this report have been powered by Aspire, a service from JS Group that supports funders to transform the delivery and impact of financial support. To find out more about Aspire and JS Group, scan the QR code.

